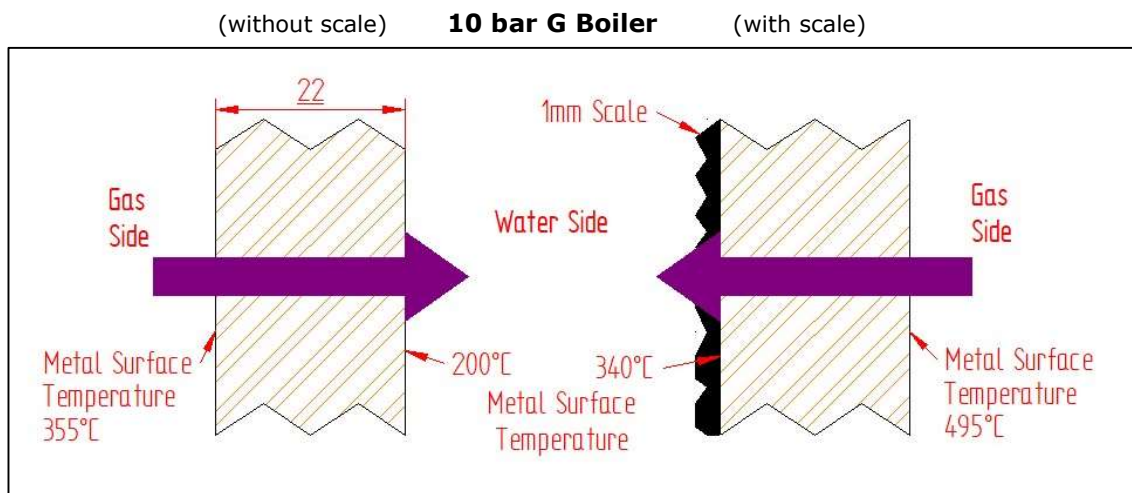
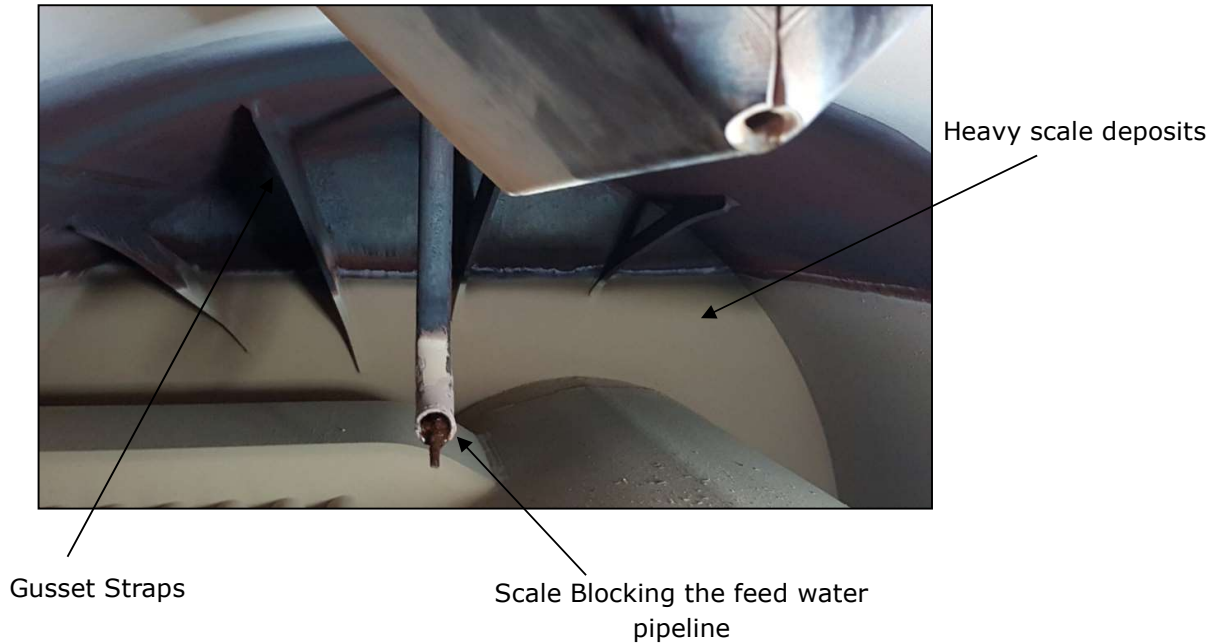


**1mm of scale on the heating surface will increase the gas side metal temperature by 150°C**



- The images above show the effects of heat transfer with and without scale formation when a 10 bar G boiler is operating with a water temperature of 185°C.
- Without scale formation the heat from the flue gases can flow freely into the water with a gas side metal surface temperature of 355°C and a water side metal surface temperature of 200°C.
- With the addition of 1mm of scale formation on the heating surface the gas side metal surface temperature rises to 495°C and the water side metal surface temperature rises to 340°C.